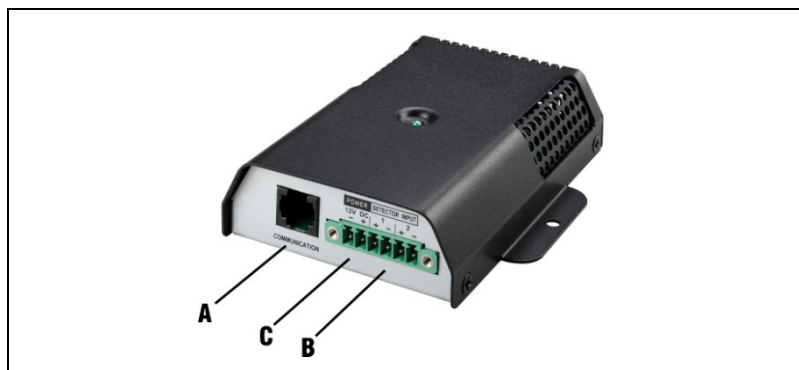


1.- Introduction

This is a temperature & relative humidity sensor. This device also offers 2 dry contact inputs (normally open) that can be used for reading external open/close door/windows switches. These 2 inputs must be externally powered with 12VDC as indicated in figure 2.

2.- Description

This device is designed to work with SNMP communication cards of the UPS. T&H sensor send temperature & humidity data to SNMP board. Users can read temperature and humidity values by using UPS interface tools (monitoring software or direct monitoring by web browser). This information can be managed to generate alarms, events or simple record in the data log.

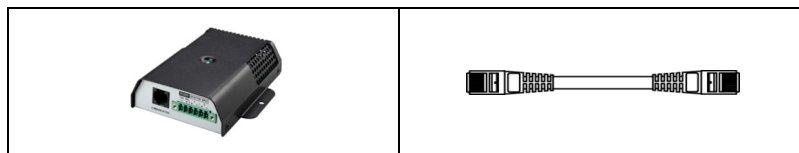


- A: Communication port to SNMP in UPS
- B: 2 dry contact inputs (powered with 12VDC external power supply)
- C: 12VDC input (not used when this device is connected to SNMP card).

3.- Revision

Please check inside the package you find below list of components:

- 1 x Sensor-TH + 1 x Cable RJ11



4.- Installation

Using RJ11 cable included with this product, connect SENSOR-TH to left port of the SNMP card in the UPS, according to figure 1.

NOTE: SENSOR-TH is powered by SNMP card. It is not necessary to connect power supply to 12VDC input in the SENSOR-TH.

FIGURE 1: Connections

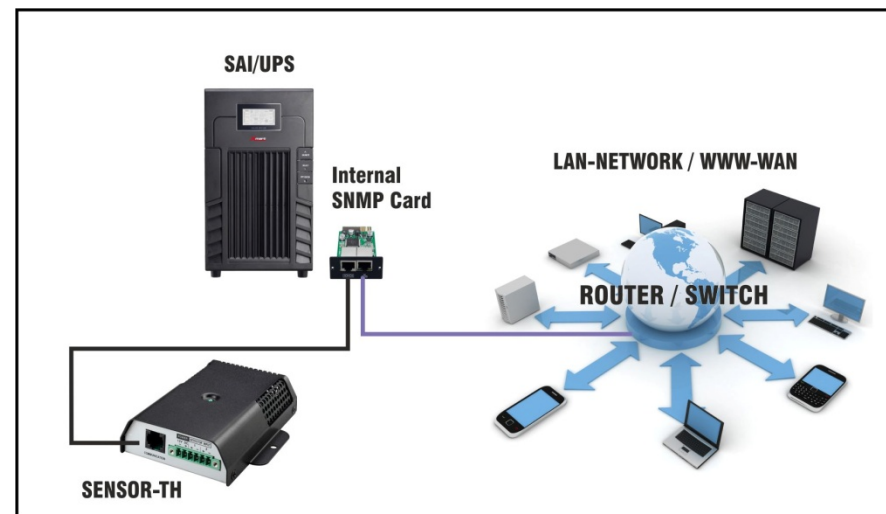
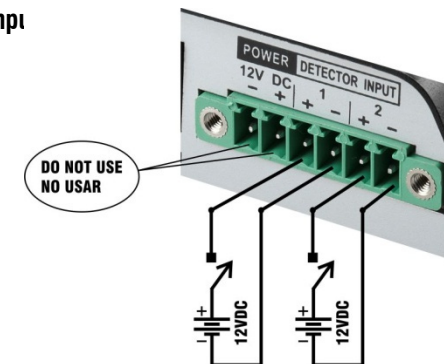


FIGURE 2: Open/Close External Switch Inputs

Open/Close inputs must be powered externally by 12Vdc power supply as indicated in the figure 2.

SENSOR-TH reads an active alarm when external switch is close and not active when open.



5.-Monitoring

User can monitor temperature and humidity information by using any of 2 available tools:

- Using UPS Monitoring Software
- Monitoring SNMP card directly from a web browser typing IP address of the SNMP card in the LAN (for SNMP05 and later versions).

FIGURE 3: Monitoring Software - Temperature & Humidity Screen Interface.

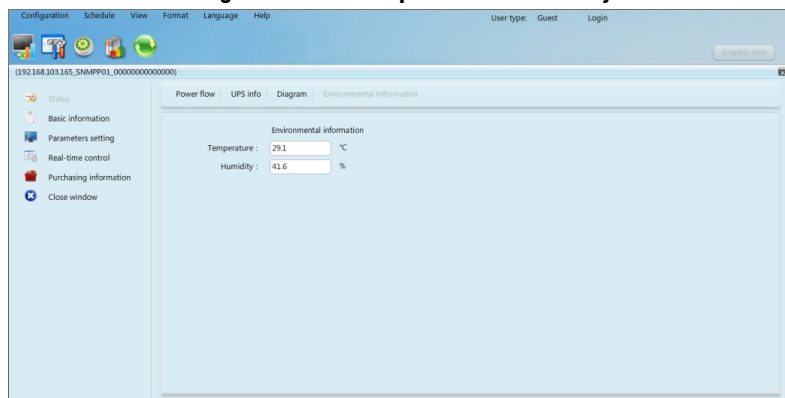
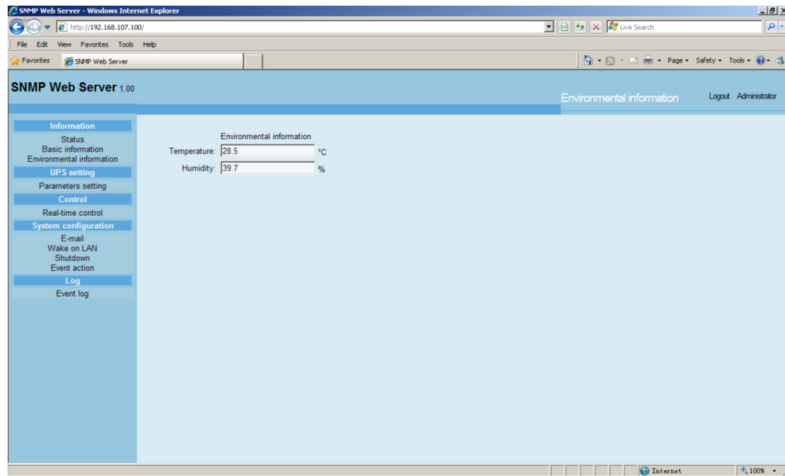


FIGURA 4: Interface Screen in Web Browser



6.-Technical Specifications

SENSOR-TH

Temperature Range / Rango de Medición de Temperatura: 0-100°C

Accuracy / Precisión: +/- 1.0°C

Humidity Range / Rango de Medición de Humedad: 10%-90% RH

Accuracy / Precisión: +/- 2.5%

Communication / Comunicación: RS232 ASCII protocol (RJ11 port)

Maximum Cable Length / Máxima Longitud de Cable: 12m

Dimension / Dimensión: 110*72*48mm

Net Weight / Peso Neto: 195gr